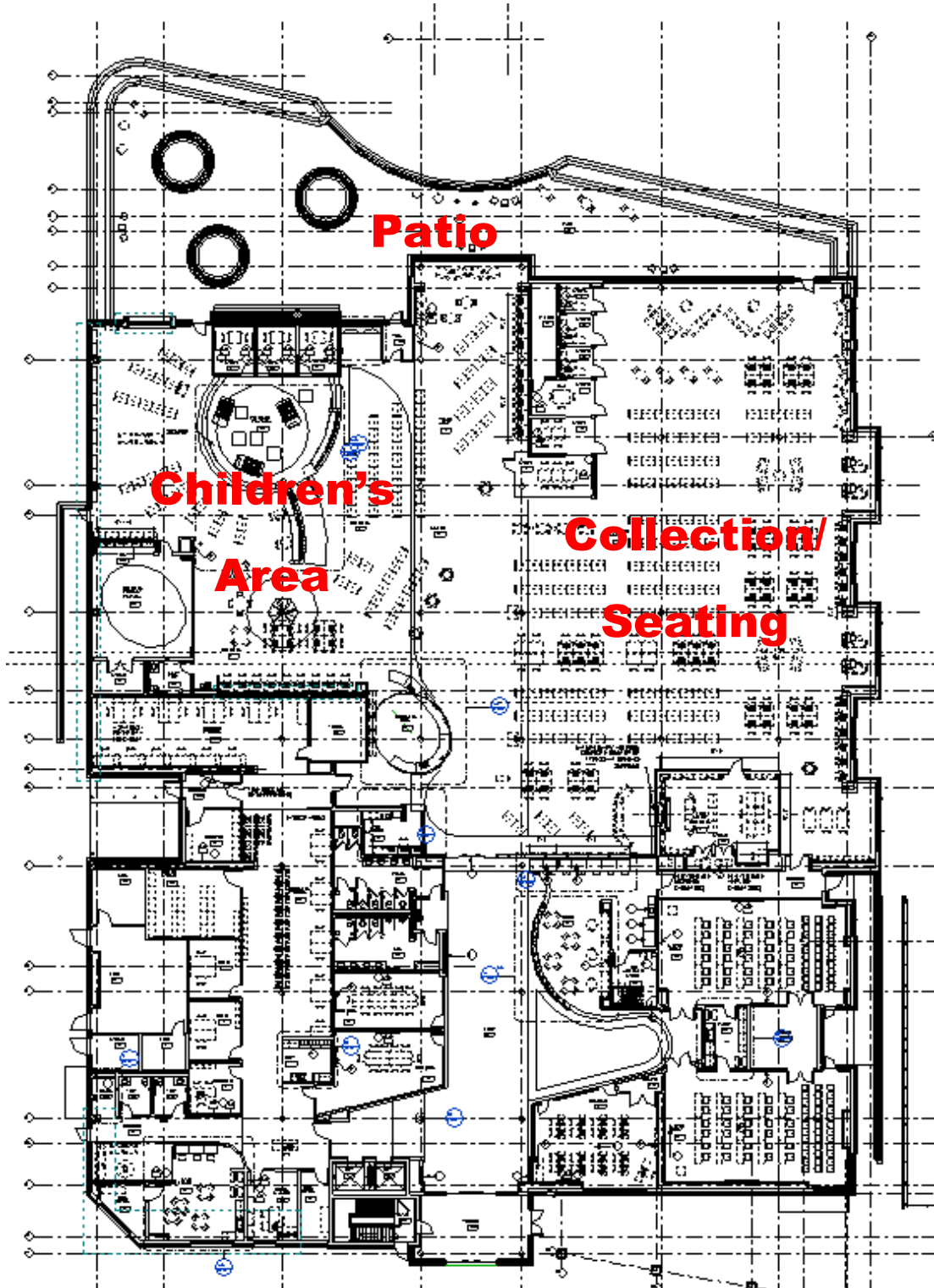


## Tech Report 1A: Lighting Proposal Memo

### Full Floor Plan

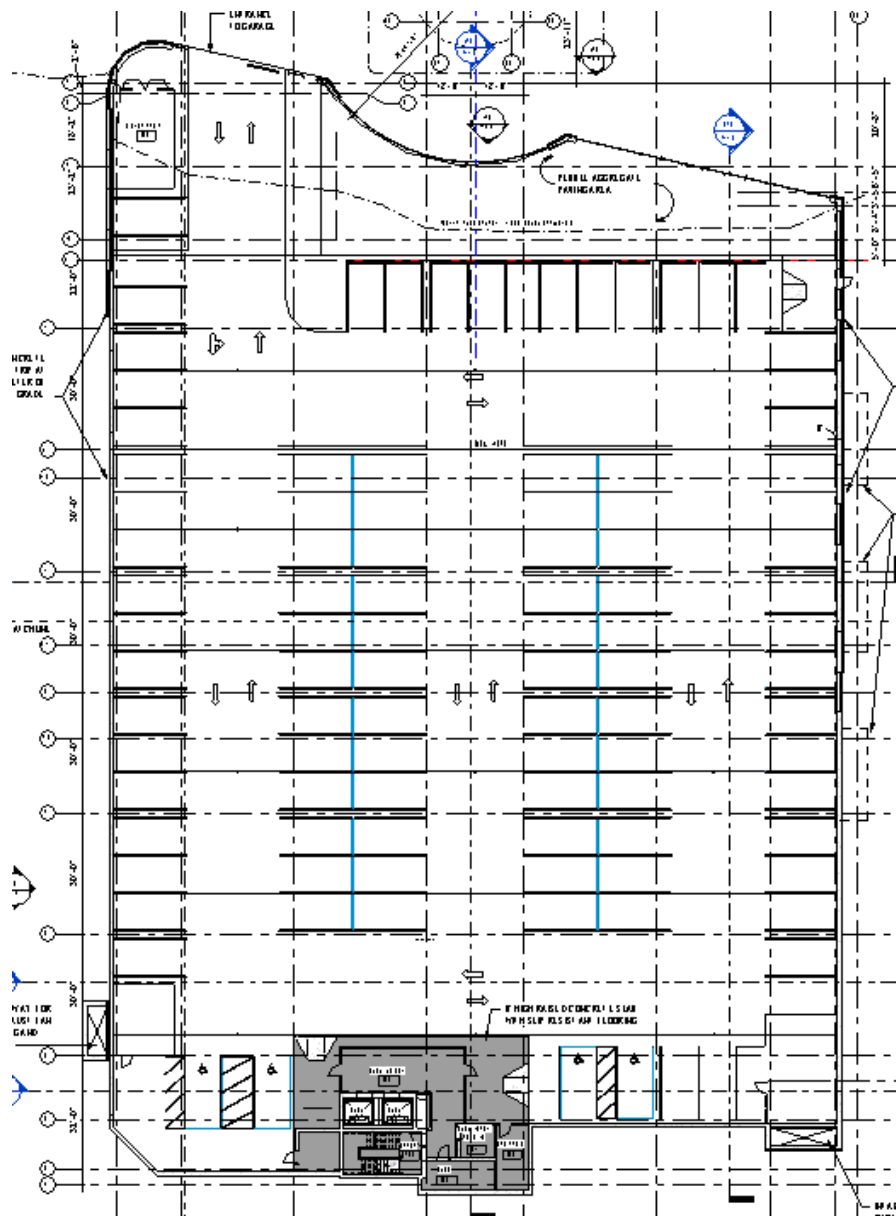


## Space 1: Parking Garage

Description: Underground, one-level, 46,000 sq. ft. parking garage. It goes to 15 feet below grade and has 100 parking spots. It also has only one entrance/exit on the north side of the building and the road goes underneath the patio above.

Tasks:

- Pedestrians walking from parked cars to elevator and stair wells on the southern end.
- People driving through the parking lot, looking for a spot, leaving, or entering.



## Space 2: Collection/Seating

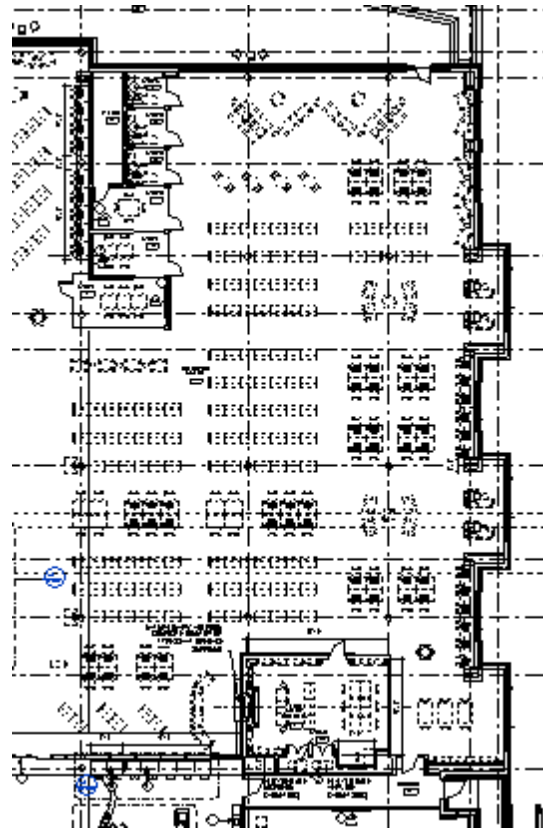
Description: Around 9,700 sq. ft. of the large open area on the main floor is set aside as the collection/seating area. This is the location of all book stacks excluding children, young adults, and local history books. It is adjacent to the young adult section, connected study rooms, as well as the circulation desk. The northern wall (the patio on the other side) is primarily glass to let in useful daylight.

### Tasks:

- Walking through aisles and spaces
- Sitting/relaxing
- Sitting and reading at chairs or desks
- Using a computer at a desk
- Using a desk for writing
- Looking at library stacks

### Psychological impression:

My main goal for the lighting in this space is to create a public feel. I want to provide plenty of light for any task that may take place. An even distribution is important to properly light all of the different areas these tasks may happen at from the chairs by the patio with plenty of daylight, to the interior tables far away from any window. The public feel is also good for this space, since the collection/seating area is next to private study rooms, where occupants can go for the opposite psychological experience while they study or read.



### Space 3: Children's/Preschooler play area

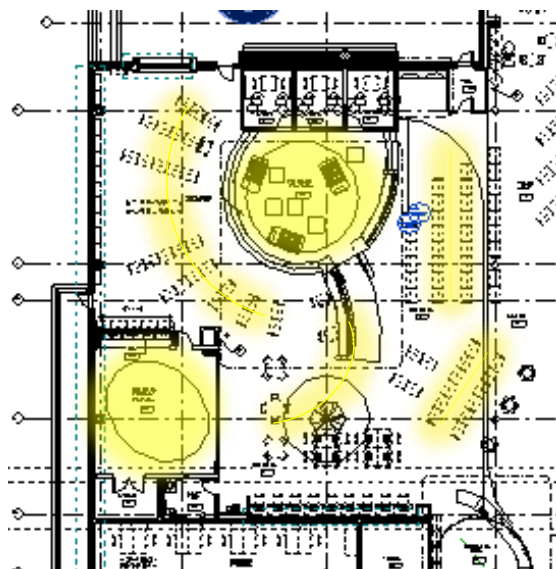
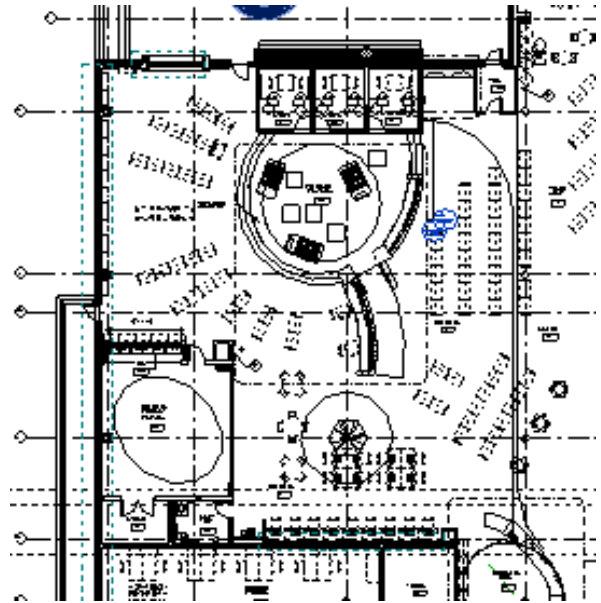
Description: A approximately 4,400 sq. ft. children's area surrounds a smaller 700 sq. ft. Preschool play area. There is another play area about 550 sq. ft. on the west side of the children's area and 3 study rooms to the north. Both play areas are comprised of ramps up to areas with toys or play houses. The children's area is also next to the young adult section and circulation desk. The northern wall (the patio on the other side) is primarily glass to let in useful daylight.

#### Tasks:

- Walking through aisles and spaces
- Sitting/relaxing
- Sitting and reading at chairs or desks
- Using a computer at a desk
- Using a desk for writing
- Looking at library stacks
- Playing in the toy houses at the preschool play area
- Playing with toys in the western play area

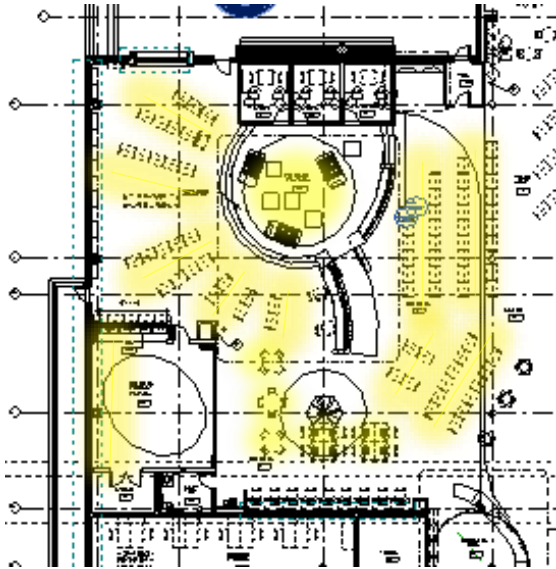
#### Schematic Design Concepts:

1. Fun
  - a. Different large decorative pendants over the two play areas creating brightest areas
  - b. Curved indirect pendant orientation to match pattern of stacks and keep visual interest.
  - c. Lights become more linear and organized towards young adult section



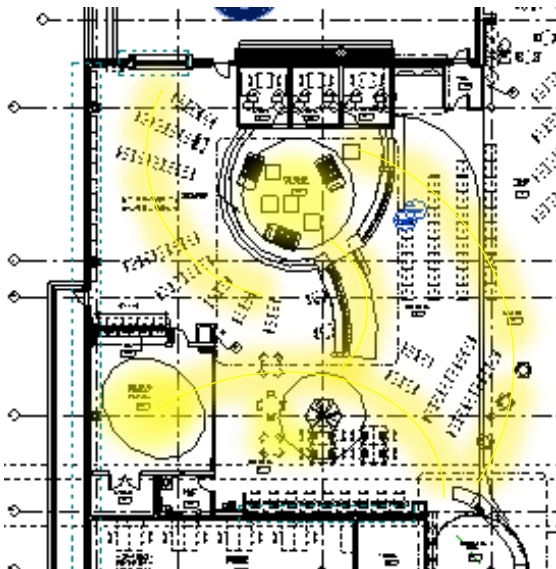
2. Educational

- a. Linear direct luminaires in aisles of book stacks creating brightest areas
- b. Wall wash near western play area and a simpler pendant over the preschool play area with moderate amount of illuminance
- c. Additional pendants for task lighting over the tables and computer desks, with less illuminance on the computer desks.



3. Flow

- a. Curved linear pendants sweeping through space creating pathways of light from circulation desk into the children's area and then to each play area, the study rooms, and the patio door to the north.
- b. Additional light for tasks at tables and play areas



#### Space 4: Patio

Description: A 4,900 sq. ft. patio is on the northern side of the building with one door connecting in to the children's area and one to the collection/seating area. The patio is surrounded by stone walls with a curved glass railing on one section. There are also, three circular planters on the patio, which are surrounded by benches, providing additional seating. The separating walls between the patio and the three interior spaces (children's area, young adult section, and collection/seating) are mostly glass and allow many views both ways and will allow for a lot of spill light during late hours onto the patio.

#### Tasks:

- Sitting/relaxing on chairs, at tables, and on benches
- Reading on chairs, at tables, and on benches
- Walking around or standing

